

Chen et al.

Method and Apparatus for Reducing Reference Character Dictionary Comparisons During Handwriting Recognition

1/7

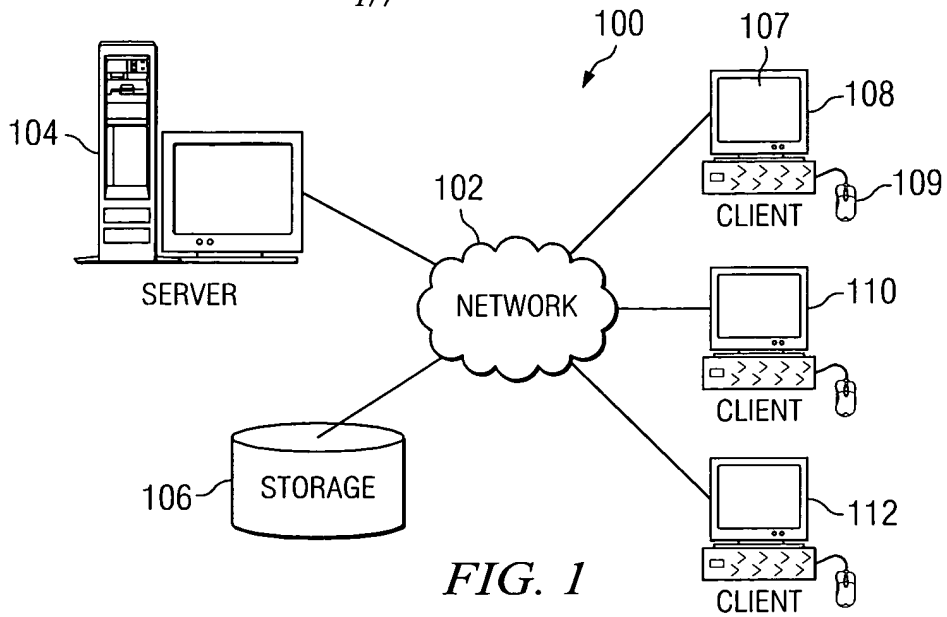


FIG. 1

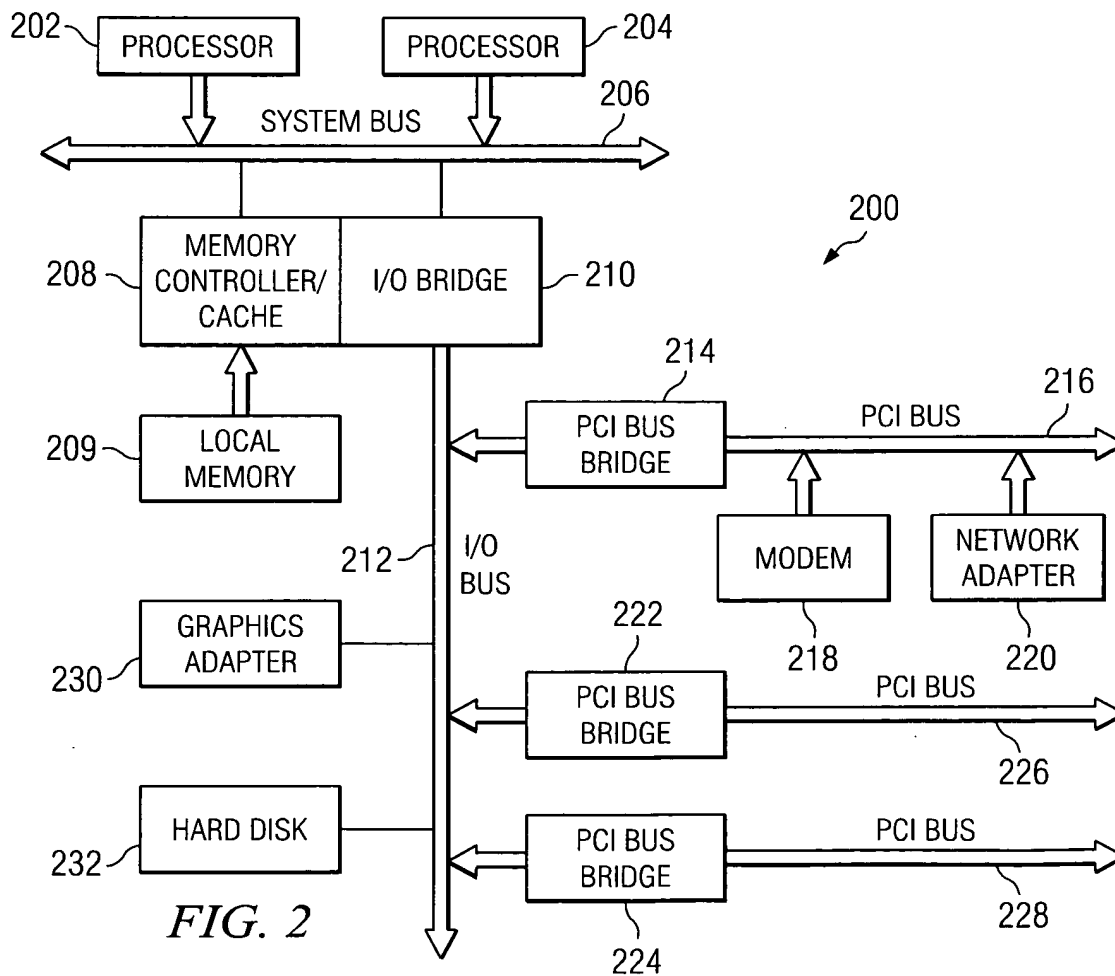
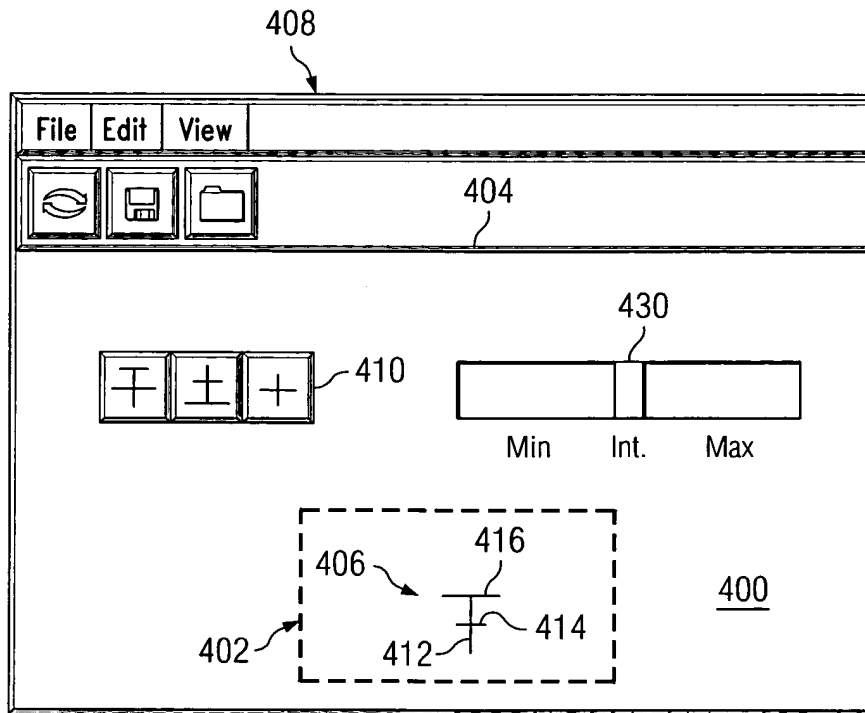
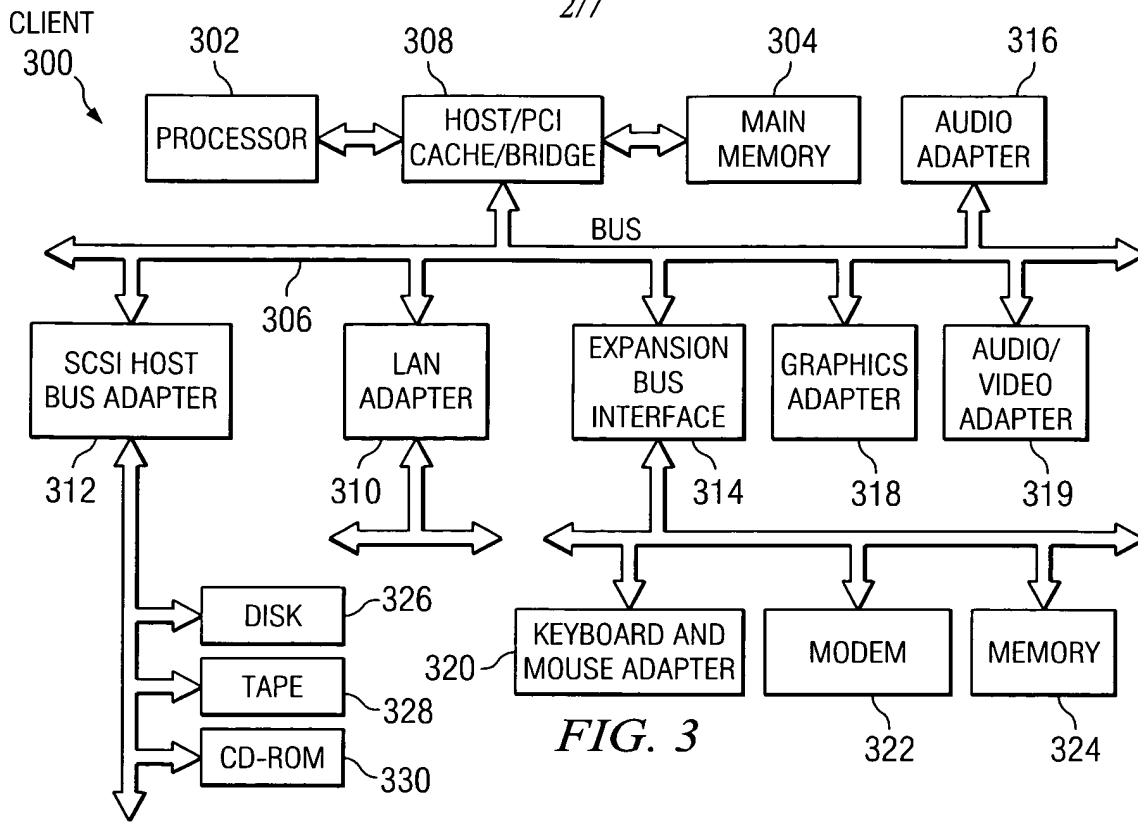


FIG. 2



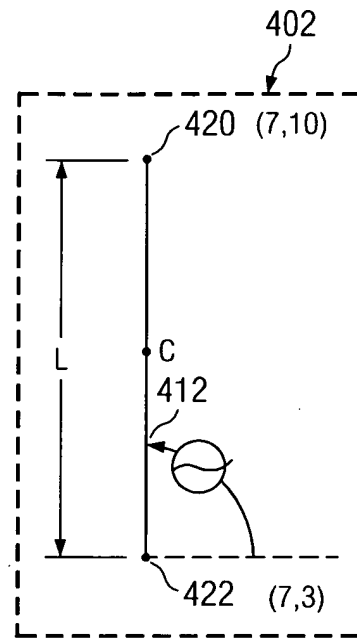
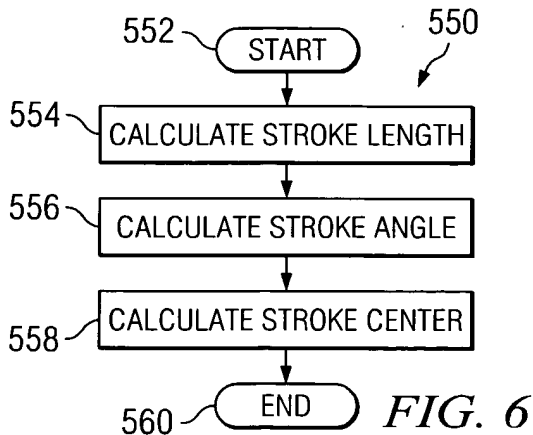
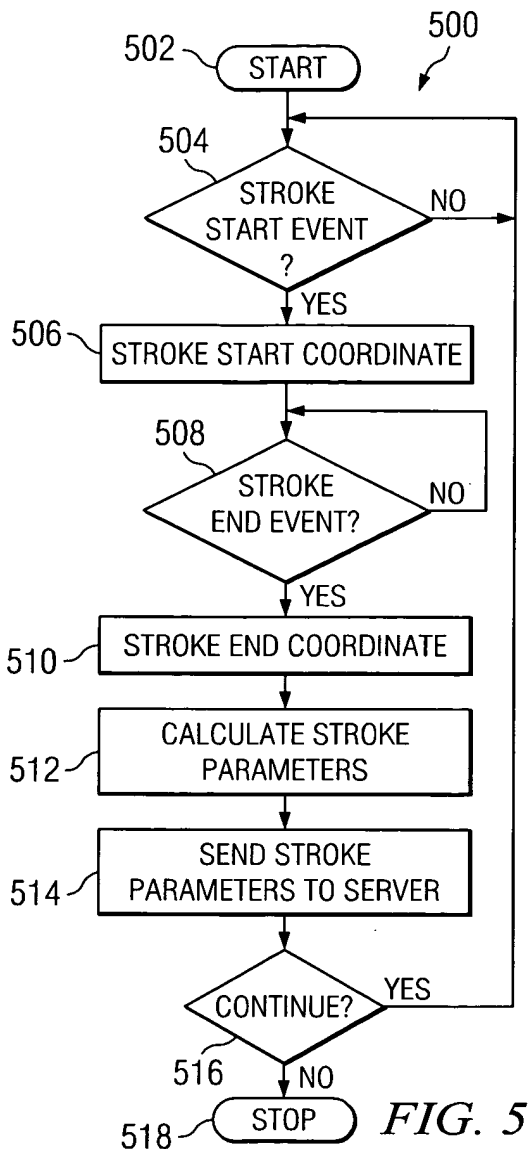
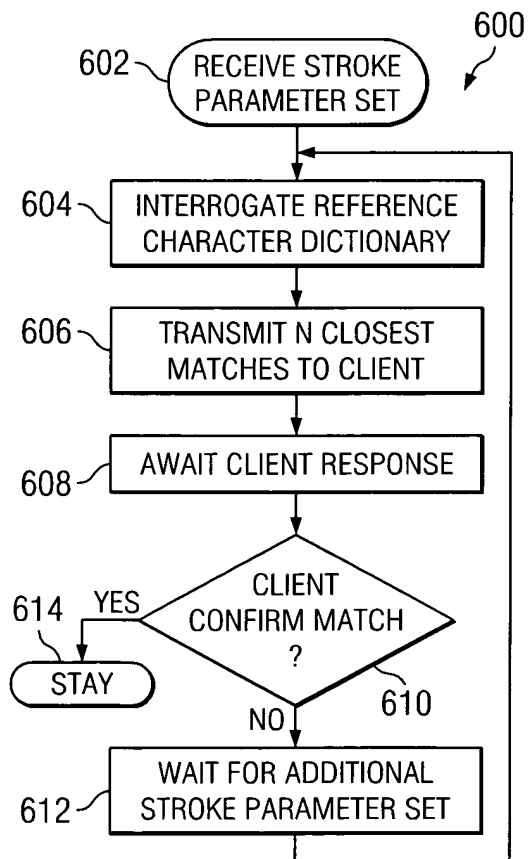


FIG. 7



710 CHARACTER NO	711 CHARACTER	712 STROKES	713 REFERENCE PARAMETER Set1	714 REFERENCE PARAMETER Set2	715 REFERENCE PARAMETER Set3	716 REFERENCE PARAMETER Set4	717 REFERENCE PARAMETER Set5	718 AUDIO
0		1	L1,θ1,C1	NULL	NULL	NULL	NULL	Char0.MP3
1	┆	2	L2,θ2,C2	L3,θ3,C3	NULL	NULL	NULL	Char1.MP3
2	┆	2	L4,θ4,C4	L5,θ5,C5	NULL	NULL	NULL	Char2.MP3
3	┆	3	L6,θ6,C6	L7,θ7,C7	L8,θ8,C8	NULL	NULL	Char3.MP3
4	┆	3	L9,θ9,C9	L10,θ10,C10	L11,θ11,C11	NULL	NULL	Char4.MP3
5	⊕	5	L12,θ12,C12	L13,θ13,C13	L14,θ14,C14	L15,θ15,C15	L16,θ16,C16	Char5.MP3

FIG. 9

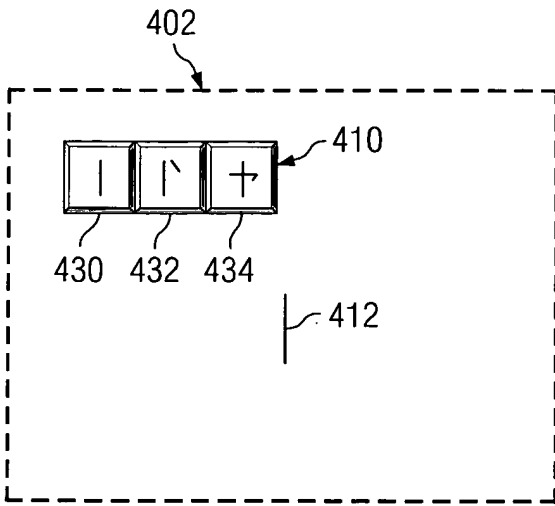


FIG. 10A

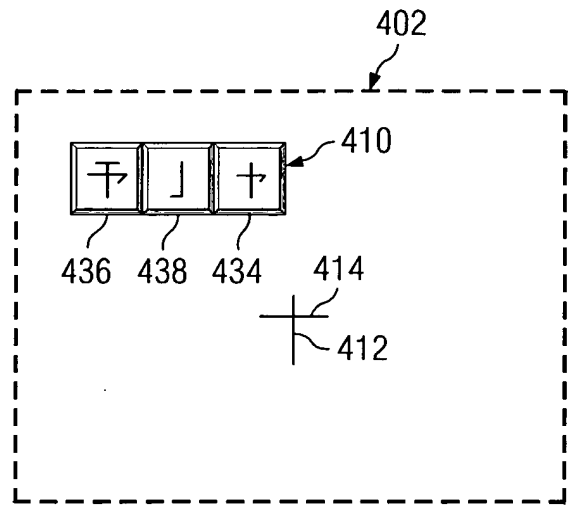


FIG. 10B

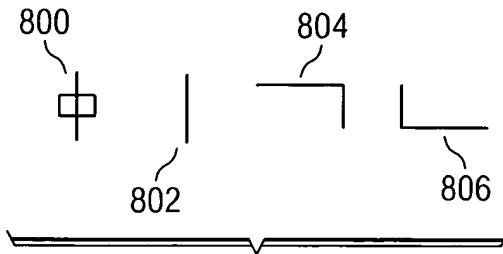


FIG. 11A

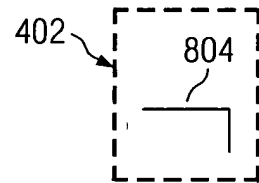


FIG. 11B

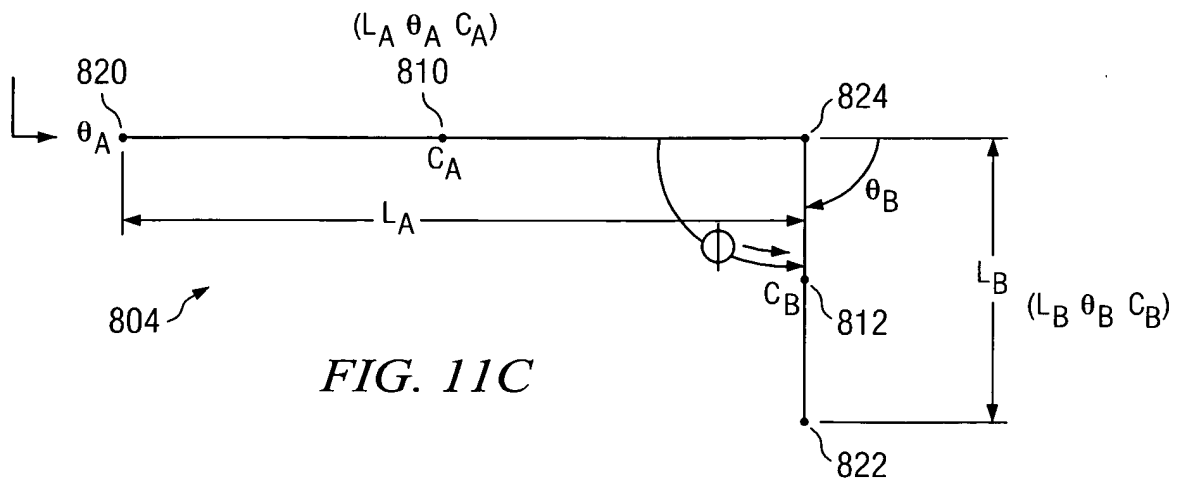


FIG. 11C

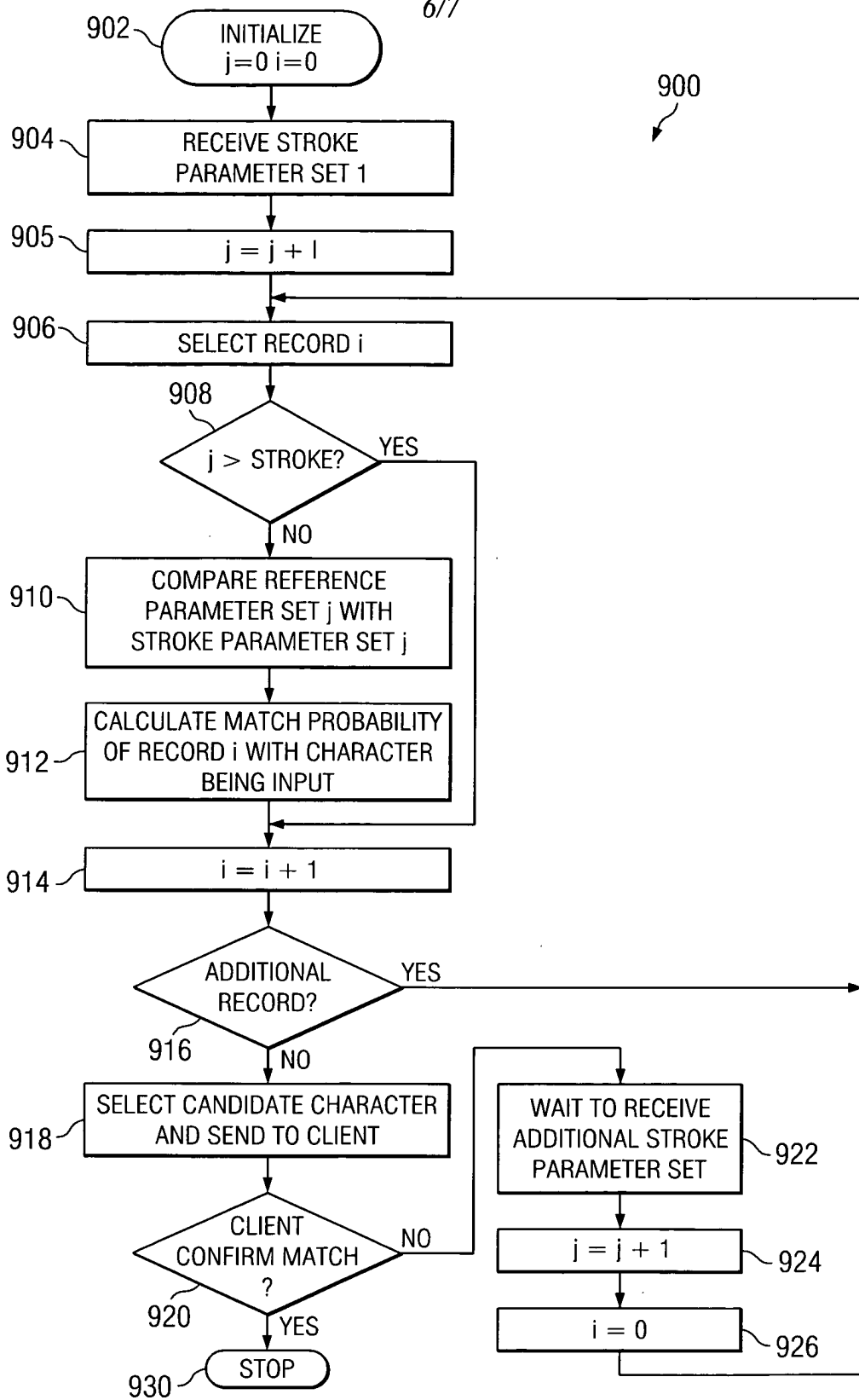


FIG. 12

FIG. 13

